

Higashiyama Kaiti and *Nihonga* in the Showa Period

– A Special Exhibition Commemorating the Opening of the New Yamatane Museum of Art: Part 2–



Higashiyama Kaiti, *End of the year*

5 December 2009 (Sat.) – 31 January 2010 (Sun.)
(Closed on Mondays, or on the day after a national holiday)

Hours

10:00 – 17:00 (Last admission at 16:30)

Admission Fees

Adults: 1200(1000) yen, University/High School Students: 900(800)yen,
Junior High/Elementary School Students and under: Free

* () indicate prices for those in groups of 20 or more.

* Admission Fee for Disability ID card holders is 1000 yen.

* This exhibition's admission is separate from that of the Museum's regular exhibition.

Approximately 50 masterpieces by Higashiyama Kaiti and other Showa Period *Nihonga* painters from Yamatane Collection are on display during the above period.

Highlights of the Exhibition

19 works by Higashiyama Kaiti including:

White Mountain, Showa Period, 1964

End of the Year, Showa Period, 1968

Autumn Colors, Showa Period, 1986

Pervading Verdure, Showa Period, 1976

Calm Spring, Showa Period, 1968

The Rising Moon, Showa Period, 1965

Kawai Gyokudo, *Chikubu Island with Mountains*, Showa Period, 1928

Kawasaki Shoko, *Autumn Plants*, Showa Period, 1961

Morita Sai, *Poppy*, Showa Period, 1966

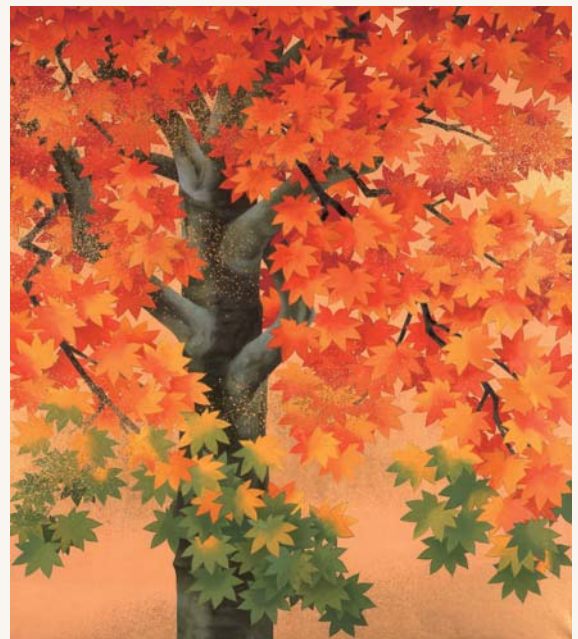
Yamamoto Kyujin, *Trees in the Snow*, Showa Period, 1957

Kato Eizo, *Firework Display*, Showa Period, 1971

Yamada Shingo, *Sky*, Showa Period, 1973

Sugiyama Yasushi, *Echoes*, Showa Period, 1970

Takayama Tatsuo, *Seated Man*, Showa Period, 1972



Yamaguchi Hoshun, *Maple Tree*
(Preparatory Drawing for Panel at the New Palace)

Paintings for the New Imperial Palace:

Higashiyama Kaiti, *Rising Tide*, Showa Period, 1970

Uemura Shoko, *Flowers and Birds of Japan*, Showa Period, 1970

Hashimoto Meiji, *Cherry Tree in Morning Sun*, Showa Period, 1970

Yamaguchi Hoshun, *Maple Tree (Preparatory Drawing for Panel at the New Palace)*, Showa Period, 1967

Yasuda Yukihiro, *Poems from the Manyoshu*, Showa Period, 1970



Higashiyama Kaito, *Rising Tide*

The year 2009 marks the 10th anniversary of the death of Higashiyama Kaito (1908-1999), known as the "national painter of the Showa period". In the anniversary year, the Yamatane Museum presents an exhibition that surveys Kaito's oeuvre, as seen in the Yamatane collection, and introduces other *Nihonga* painters active in the Showa era. Japan during the Showa era was a

place of massive change, with its experiences during World War II followed by its post-war recovery and dynamic growth. Rapid modernization and democratization meant that new values and views emerged one after the other. It was a complex time of competing concepts, whether Japan vs. the west, traditional vs. modern, or the spiritual vs. the material. The value systems that reflected a new world order influenced the aesthetics of the modern *Nihonga* painters and brought about a diverse range of styles. Amidst the diversity, Kaito and his fellow Showa painters actively sought out and employed previously unseen materials and methods, as they developed the ways and means of a new *Nihonga* with an all the freer imagination and creativity.

This exhibition features 19 works by Kaito from the Yamatane collection, along with works by his Tokyo Bijutsu Gakko classmates, Hashimoto Meiji, Kato Eizo, and Yamada Shingo. The exhibition is further enhanced by a display of paintings by members of the *Mikokai* group whose paintings were the talk of Showa painting circles, such as Morita Sai, Yamamoto Kyujin, Sugiyama Yasushi, and Takayama Tatsuo.



Hashimoto Meiji, *Cherry Tree in Morning Sun*

This exhibition is the second exhibition commemorating the opening of our new museum facilities. The galleries will be adorned by an impressive display of works created by Showa painters on commission from the Imperial Household Agency for the decoration of the New Imperial Palace completed in 1968. The exhibition features Higashiyama Kaito's *Rising Tide* (1970), a massive 9-meter-wide framed wall painting, and is the first public display in 12 years of four works, namely Uemura Shoko's *Flowers and Birds of Japan* (1970); Hashimoto Meiji's *Cherry Tree in Morning Sun* (1970), Yamaguchi Hoshun's *Maple Tree (Preparatory Drawing for Panel at the New Palace, 4:1 scale, 1967)*, and Yasuda Yukihiro's *Poems in the Manyo* (1970).

We hope that these *Nihonga* paintings will provide visitors with a sense of the values and aesthetics of the Showa period, a time that allowed each artist's unique creativity to achieve a full flowering.

Organized by: Yamatane Museum of Art and The Yomiuri Shimbun



Higashiyama Kaito, *Autumn Colors*

山種美術館
Yamatane Museum of Art